



WHAT'S IN THE BOX

Congratulations on your purchase of an Oz Glide Tow Hitch. In this carton you will find:

- ✓ Complete Assembled Oz Glide
- ✓ DO 35 Tow Pin
- ✓ DO 35 Tow Pin Cover
- ✓ DO35 Tow Pin Locking Tool
- ✓ Handbrake Lever
- ✓ Oz Glide Protection Cover
- ✓ Instructions Package
- ✓ 4 x 8.8 High Tensile Bolts
- ✓ Stubby Cooler

You are about to enjoy a remarkably smoother and safer ride.

Happy Travels from the Team at



Oz Glide Instructions

for Model OZ-DO35-V3

Photos for instructional purposes only.

Some illustrations show the V2 model however fitting instructions are the same.

Functions and Features:

- Oz Glide is suitable for use on Caravans / Poptops / Trailers and Horse floats up to 3.5 ton and fitted with electric braking systems where required. The models demonstrated in these instructions are: **OZ-DO35 V2 and V3 Off Road Couplings + Patented Pin + locking tool**
 - Your Oz Glide is ADR 62/02 approved to 3.5 tonne.

The Oz Glide device is supplied pre-assembled and ready for use with Centre pins “lock-tight secured” at 80Nm. **Do not remove the centre pins.**



Installation of the Oz Glide Device:

- Ensure bolt pattern is in line with the Oz Glide pattern. Oz Glide design will fit standard '4 stud' pattern of couplings up to 3.5 ton, however some couplings may have "burrs" or slightly varied stud positions and may need honing-out.
- Remove existing coupling from the A-Frame of your caravan /trailer.



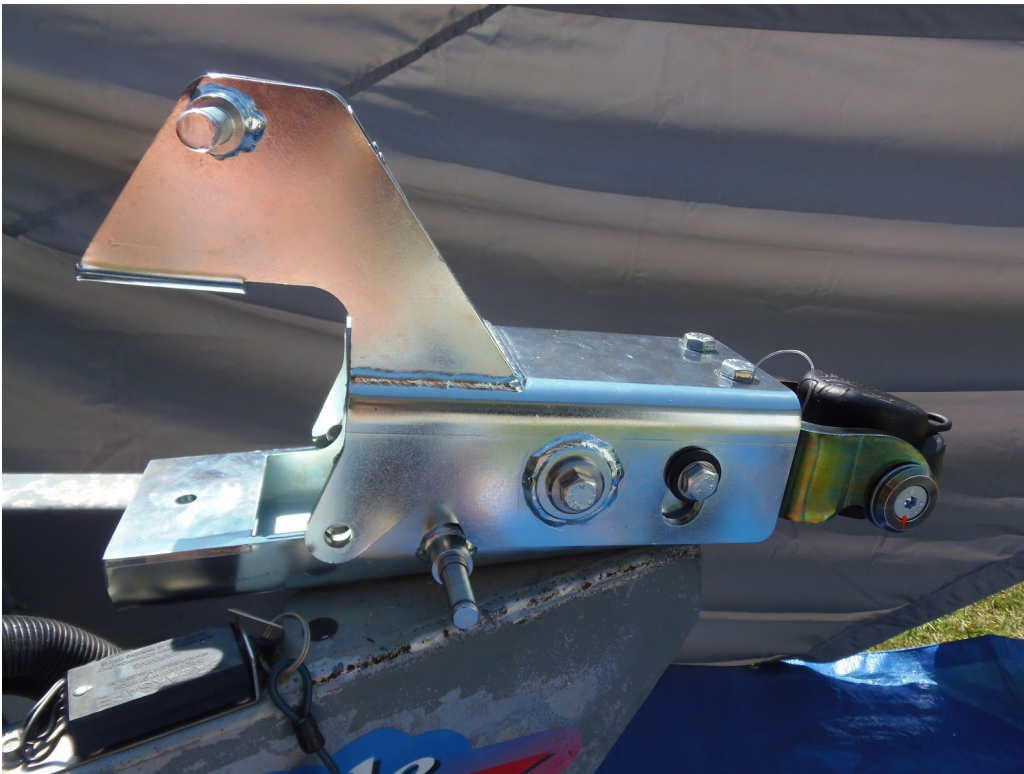
- Remove Lock-Out pin on the Oz Glide. (*located just behind the hydraulic Dampeners*)



- **Remove airbag** from the Oz Glide. (*Note:- there are 2 Nuts on the top and 1 bolt on the bottom of the airbag*) (Bolt is accessible from the bottom of the Oz Glide using a 14mm socket) You may need to remove the **valve, not the stem** and deflate the airbag to allow easier removal and fitting.



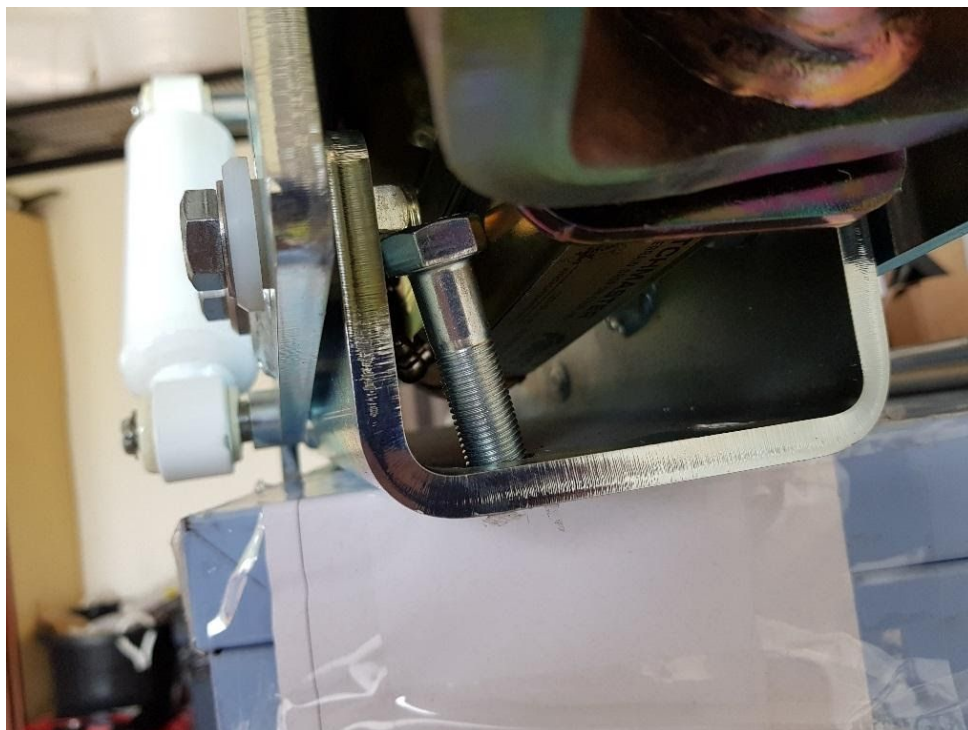
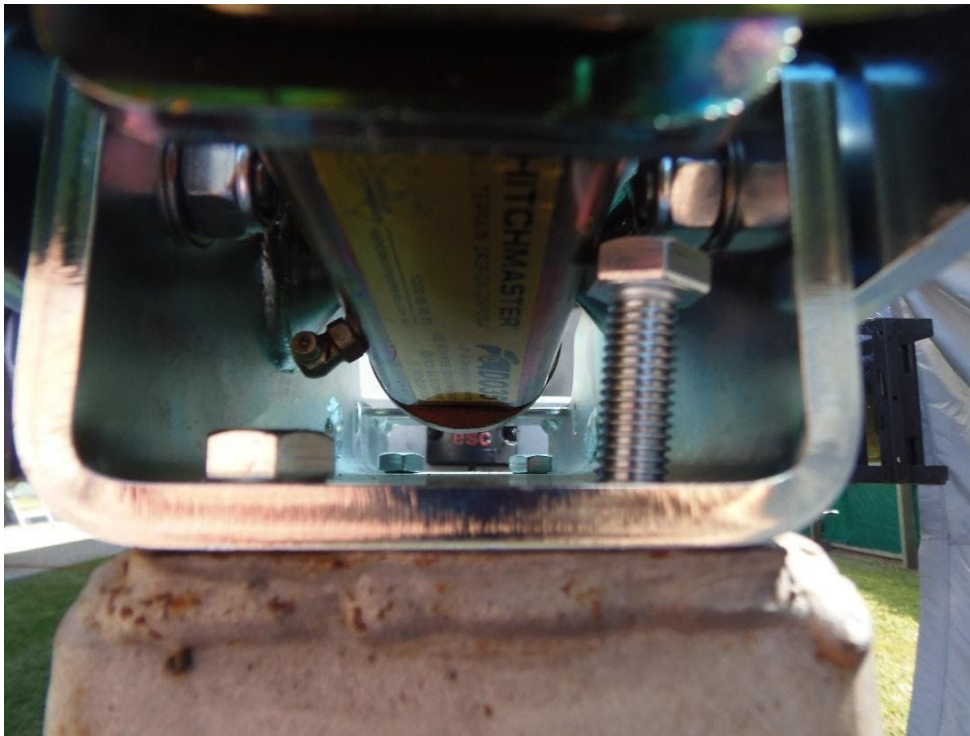
- Place the Oz Glide device onto the A Frame ready for installation.



- Tilt Oz Glide device to the **Forward** position allowing access to **Rear** bolts. Then tilt the Oz Glide to the **Rear** position allowing access to the **Forward** bolts. # (**Bolts and nuts are supplied with your Oz Glide**)

It is always recommended that M12 or ½ inch grade 8.8 bolts are used to attach the coupling to drawbar. Bolts should be fastened with nylon nuts. Bolts should be an appropriate length to ensure 100% thread engagement of the nut.

- **SPECIAL NOTE: Bolts MUST be fitted downwards** through the Oz Glide and into the A Frame then secured with nuts on the bottom (as seen below) (Note: You may have to lift the Oz Glide a little to allow the bolts to fall straight through)



Special NOTE: Grease nipple can also be accessed from this position however in the first instance the DO35-V3 comes pre-greased. Recommend greasing every 10 to 15,000km or annually



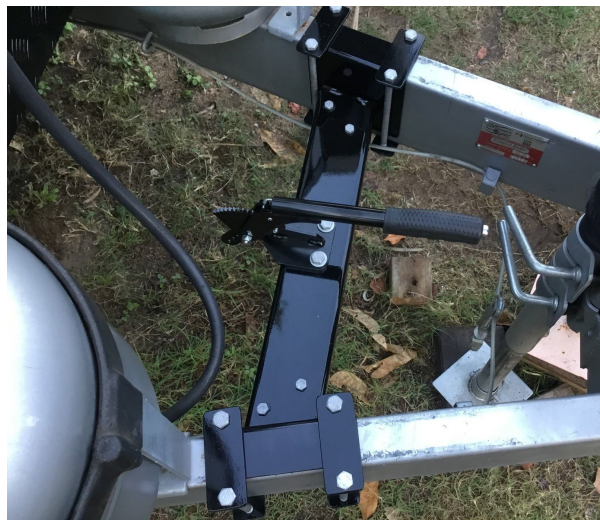
- Do not over tighten bolts. M12 8.8 Bolts tightening are 88Nm Dry and 66Nm lubricated. (light threading oil)

Replace Airbag securing the 1 bolt on the bottom first (to help locate bolt hole) and then the 2 nuts on the top.

(Note: **-Do not** over tighten the nuts or the bolt on the airbag)



Some caravans / trailers that have a handbrake as part of the coupling and will require the handbrake to be relocated- See examples below





You are now ready for operation

Operating Instructions:

- Before connecting the caravan / trailer to the tow vehicle, remove the locking pin from the Oz Glide and then inflate the airbag to approx 10 PSI with a foot pump or small air compressor. This allows the airbag not to completely collapse when initially hooked to your tow vehicle.
(Note: if you inflate the airbag before removing the Lock-out pin, then you may not be able to remove it. Deflate the airbag and remove the pin)
- As the Trailer/Caravan is lowered onto the tow ball / Pin (*dependant on tow ball weight*) the airbag should compress and will absorb the weight of the caravan / trailer tilting the Oz Glide backwards.
- Inflate the airbag until the Oz Glide top section is **level (parallel)** with the bottom section.
Note: (*you can line up the "Lock-Out Pin" holes as a guide*)



Your Oz Glide is ready to roll – (of course once all other pre-trip checks are completed.)

What to expect:

- The Oz Glide is most effective if the ball weight is not excessive (e.g. Static Ball weight must NOT exceed 350kg).
- The DO35-V3 Oz Glide is not to be used with load levelling devices, as these devices may reduce efficiency and can place unnecessary stress on components.
- Once the Oz Glide is level you can check its movement by simply pushing it up and down on the A Frame.
- As you travel down the road the Oz Glide will continue to absorb the shock between your tow vehicle and the Caravan / Trailer and in doing so, will also assist in maintaining the weight on your steering, reducing chassis flex and stress on both the trailer and tow vehicle and significantly reduce the downward dynamic forces, giving you a much more comfortable, smoother and safer ride.

Troubleshooting:

The Oz Glide comes with a Lock-Out pin in case of an Airbag or valve failure. The Lock-Out Pin simply slides into the Oz Glide below the Dampeners and Forward of the Airbag. This then returns the Oz Glide to a static coupling until the airbag can be reinflated.

Maintaining Unit:

- Ensure maintenance is only carried out when your caravan / trailer/ horse float is uncoupled from your tow vehicle.
- The Bushes in the centre pins of the Oz Glide device are pre-tightened to 80Nm and sealed with Lock-tight. Recommended visual inspection of bushes and bump stops at 10,000km intervals by an authorised service centre.
- If the Oz Glide DO35-V3 Coupling requires greasing there is a single grease nipple which can be accessed from the front with a grease gun extension. *(Airbag may need to be removed to allow greater access to the grease nipple)*
- Keep the Oz Glide clean by hosing the device to remove built up dust /mud.
- Silicone spray may be used on the Centre Pins if dust/dirt has caused squeaking.
- Oz Glide has undergone an Electrostatic Powder Coating process to give the best protection finish possible however, as expected it is not unusual for the powder coating to fade with time and weather. This will not harm the operation of the Oz Glide.
- Please note: Each Oz Glide undergoes a manual assembly by us. This means that despite all care taken, on occasion, some minor scratching may occur however this will not affect the Oz Glide operation in any way.

Accessories:

- **Oz Glide cover:** For year round protection both at home and during your travels the Oz Glide cover fits easily over the device and is secured by an adjustable strap. The cover includes safety strips within the design to protect against inattentive pedestrian traffic particularly at night. *(Supplied)*



Frequently Asked Questions:

Q. What are the main differences between standard couplings and the Oz Glide?

A. There are numerous couplings available on the Australian market that you can use to hook a caravan / trailer to a tow vehicle however; the bottom line seems to be that regardless of the preferred type, they are all "static connections". This means that when either of the two vehicles are subjected to bumps, there is a reciprocal transfer of "*forces*" between the two vehicles thus creating an uncomfortable ride for both. The Oz Glide is the only device available on the market that fits most trailer A Frames and assists in absorbing a *significant* amount of these "*forces*" created between the two vehicles when towing. (See Oz Glide website videos "*Oz Glide in Action*")

Q. What air pressures should I use in the Airbag?

A. One of the features of the Oz Glide is that because tow ball weights are a variable (*i.e. each trailer is different*), the Oz Glide Airbag needs only to be inflated until the top of the Oz Glide device is level with the bottom. (*i.e. inflate (or deflate) the airbag until the Oz Glide device is parallel with its base*). The pressure (PSI) in the Airbag will vary depending on the tow ball weight. Another way to view if the Oz Glide is level is to simply line up the "Lock-Out" pin holes.

Q. Do I need to deflate the airbag when I unhook my Caravan/ trailer?

A. You can deflate the airbag if you want to however; if you choose not to; as the weight is removed from the tow ball when winding upwards on the jockey wheel to remove the trailer drawbar from the tow vehicle, the airbag will tilt the Oz Glide forward requiring you to wind the jockey wheel higher to separate from the tow pin. You can also insert the "Lock Out Pin" (*supplied*) into the side of the Oz Glide to hold the Oz Glide in place before winding the jockey wheel in the upwards motion to raise the trailer drawbar.

Q. Do I need to adjust the air pressure in the airbag regularly?

A. yes, but only when the ball weight of the van / trailer has changed or when extended time has allowed the airbag to lose some pressure. (*The Oz Glide needs to be in the "level" position when hooked to your tow vehicle*)

Q. Do I need to change my tow hitch tongue?

A. The DO35-V3 Model usually fits most towbar designs.

Q. Can I use weight distribution bars with the Oz Glide?

A. The need for Weight Distribution Hitches (WDH's) is very much dependent on the type of caravan and tow vehicle setup including correct loading of the van and tow vehicle however; Oz Glide does not allow for the use of WDH's as they can reduce efficiency.

If you have any further questions, please don't hesitate to contact us.

Terms of Use and limitations of Liability – see warranty sheet (Provided)